

**South Cambridgeshire
Proposed Submission
Policies Map: July 2013**

**Inset No. 86 Papworth Everard
Map 1 of 4
Scale 1:5000**

Reproduced from the Ordnance Survey Mapping with the permission of the Controller of Her Majesty's Stationery Office © Crown Copyright. Unauthorised reproduction infringes Crown Copyright and may lead to prosecution or civil proceedings.

NO FURTHER COPIES MAY BE MADE. SCDC Licence 100022500 (2013)

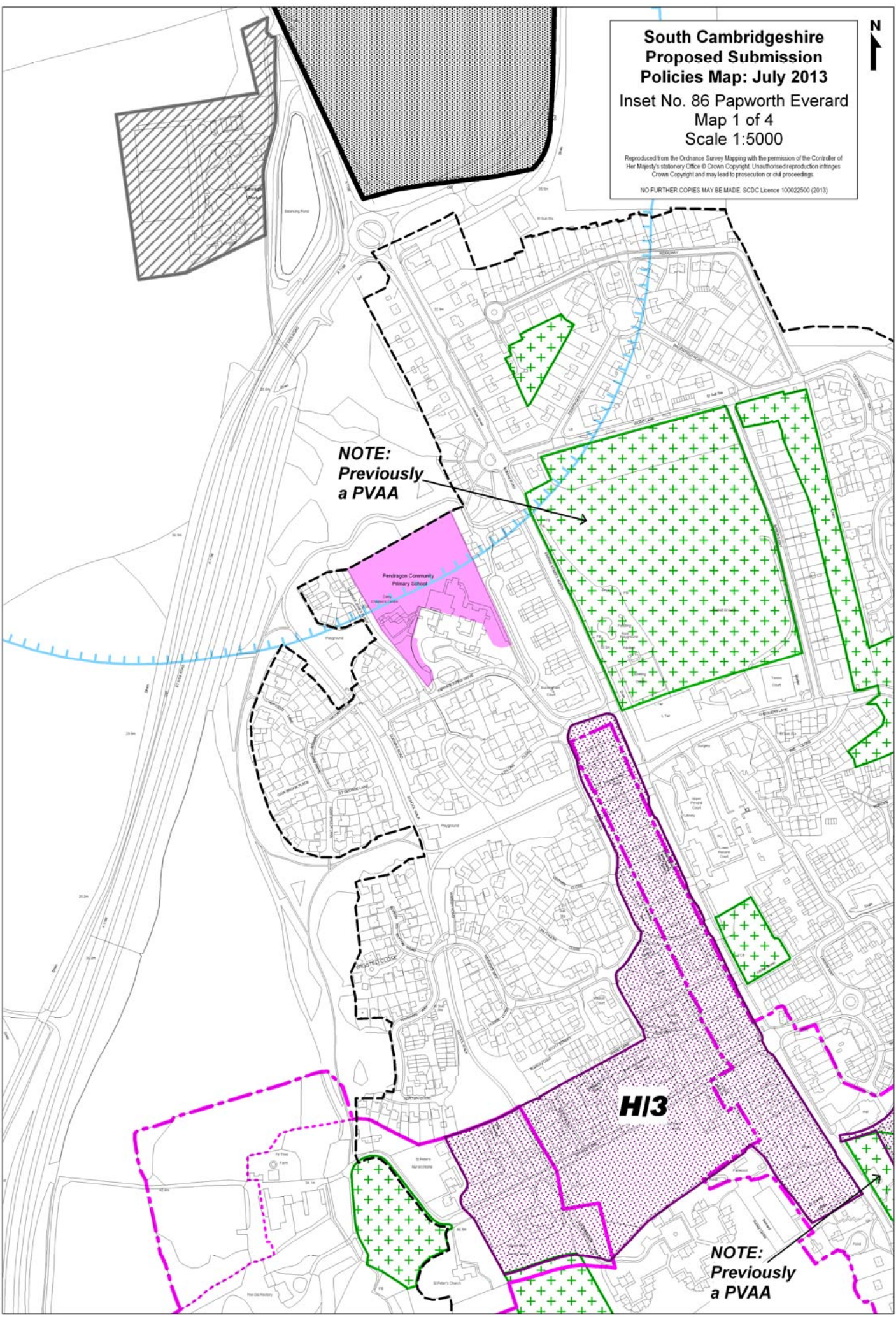


**NOTE:
Previously
a PVAA**

Papworth Community
Primary School

H13

**NOTE:
Previously
a PVAA**



**South Cambridgeshire
Proposed Submission
Policies Map: July 2013**

**Inset No. 86 Papworth Everard
Map 2 of 4
Scale 1:5000**

Reproduced from the Ordnance Survey Mapping with the permission of the Controller of Her Majesty's Stationery Office © Crown Copyright. Unauthorised reproduction infringes Crown Copyright and may lead to prosecution or civil proceedings.

NO FURTHER COPIES MAY BE MADE. SDCD Licence 100022500 (2013)

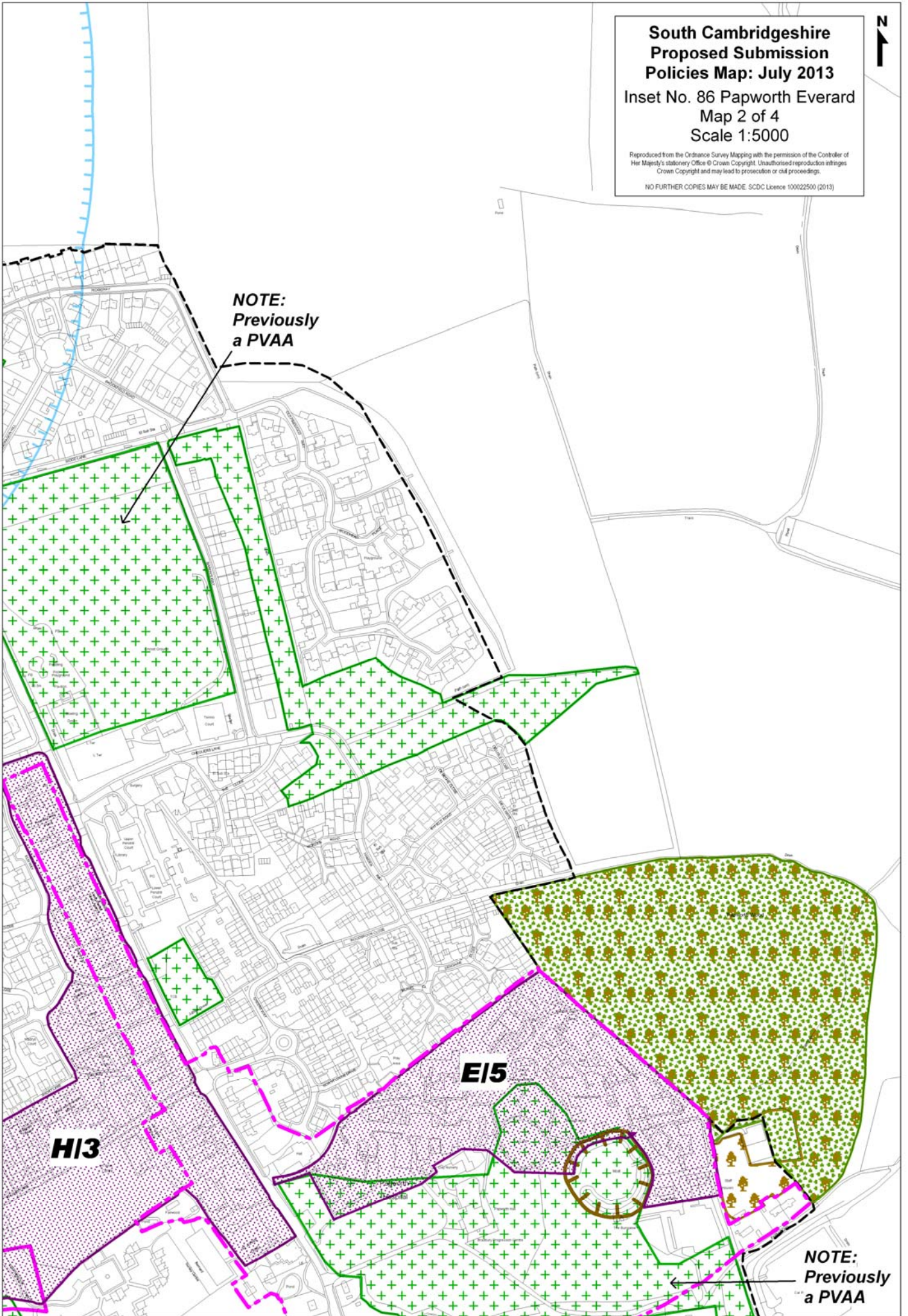


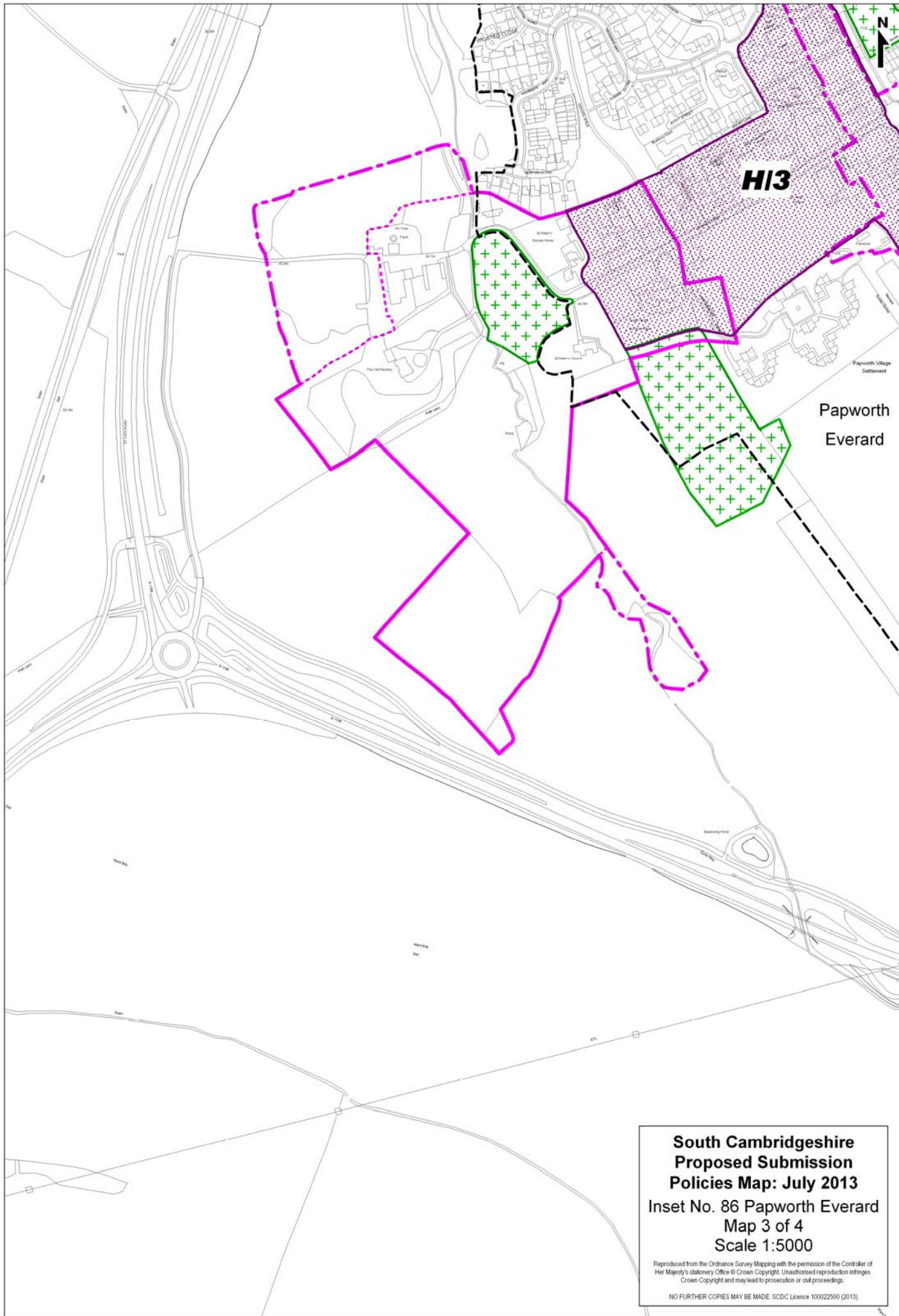
**NOTE:
Previously
a PVAA**

E15

H13

**NOTE:
Previously
a PVAA**





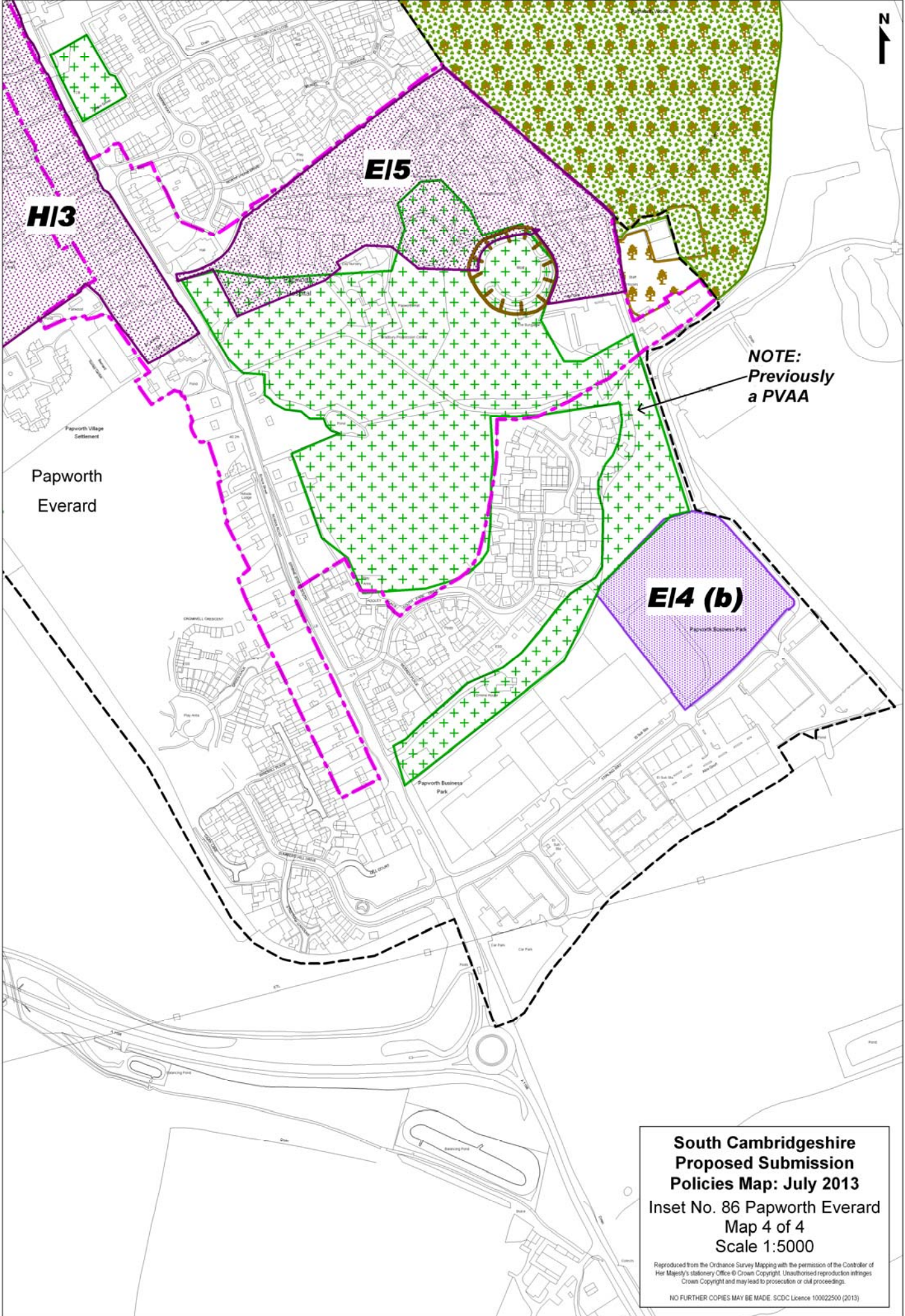
HI3

Papworth
Everard

**South Cambridgeshire
Proposed Submission
Policies Map: July 2013**
Inset No. 86 Papworth Everard
Map 3 of 4
Scale 1:5000

Reproduced from the Ordnance Survey Mapping with the permission of the Controller of Her Majesty's Stationery Office © Crown Copyright. Unauthorised reproduction infringes Crown Copyright and may lead to prosecution or civil proceedings.

NO FURTHER COPIES MAY BE MADE. SCDC Licence 100022500 (2013)



H13

E15

E14 (b)

NOTE:
Previously
a PVAA

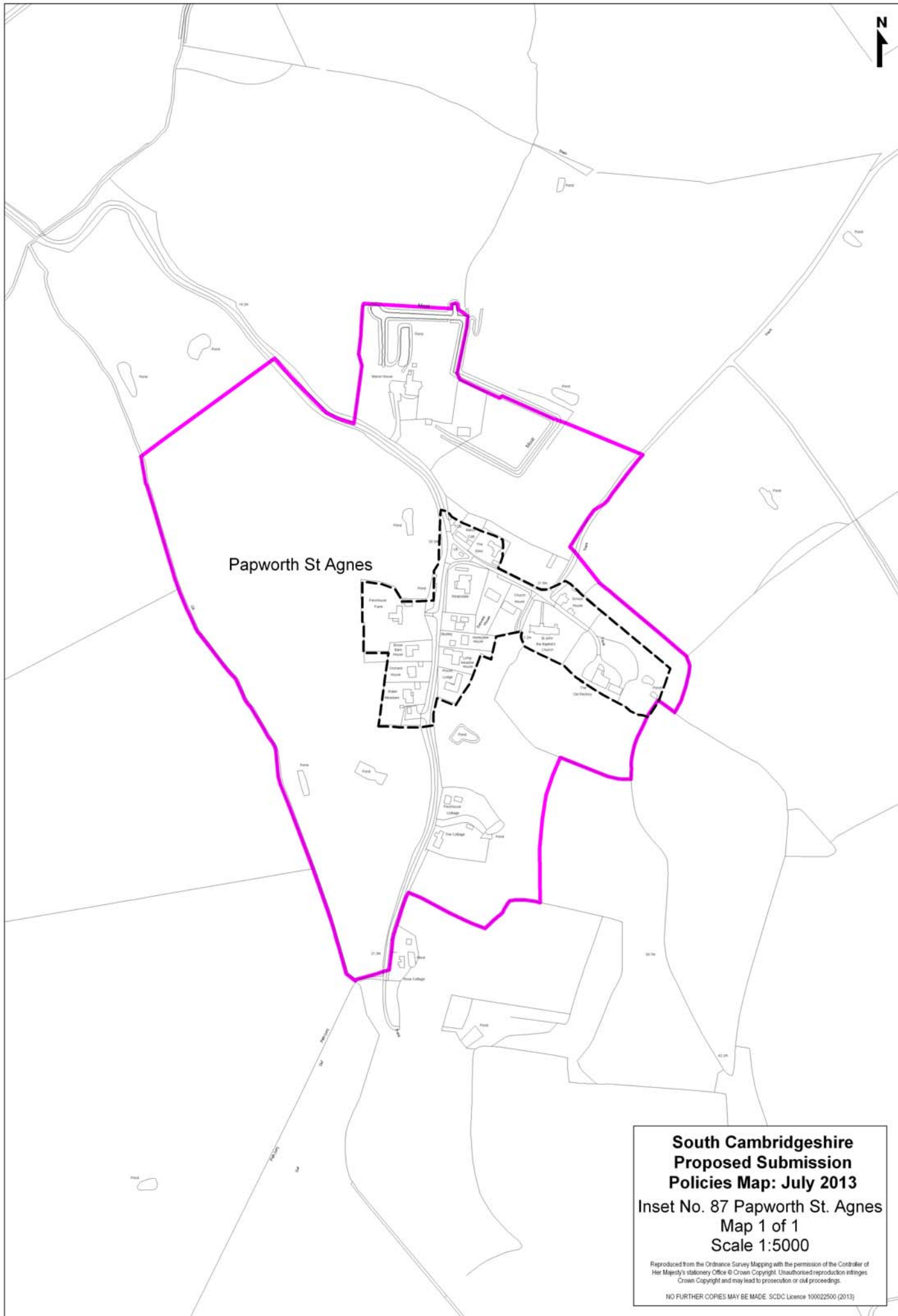
Papworth
Everard

**South Cambridgeshire
Proposed Submission
Policies Map: July 2013**

**Inset No. 86 Papworth Everard
Map 4 of 4
Scale 1:5000**

Reproduced from the Ordnance Survey Mapping with the permission of the Controller of Her Majesty's Stationery Office © Crown Copyright. Unauthorised reproduction infringes Crown Copyright and may lead to prosecution or civil proceedings.

NO FURTHER COPIES MAY BE MADE. SCDC Licence 100022500 (2013)

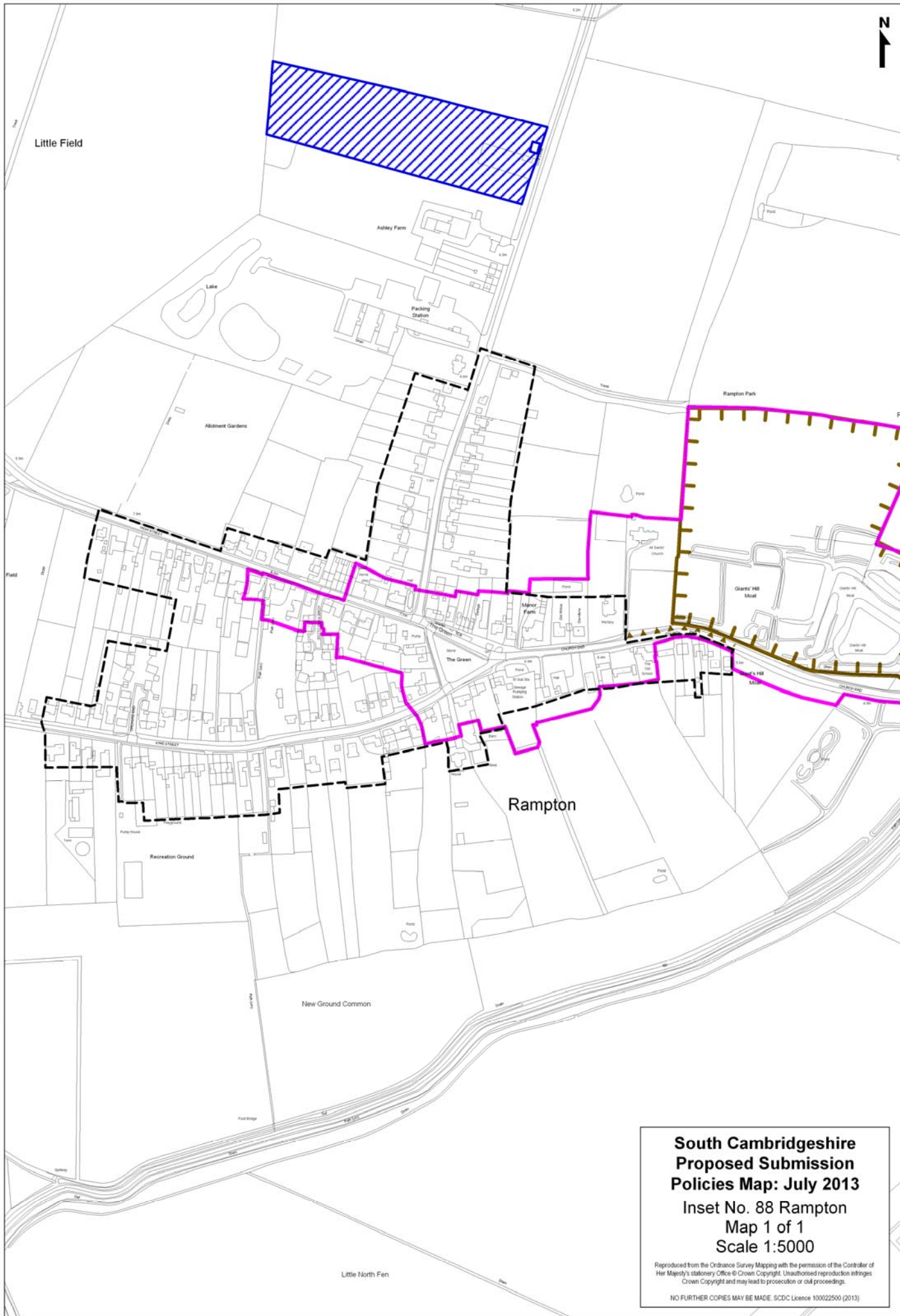


Papworth St Agnes

**South Cambridgeshire
Proposed Submission
Policies Map: July 2013**
Inset No. 87 Papworth St. Agnes
Map 1 of 1
Scale 1:5000

Reproduced from the Ordnance Survey Mapping with the permission of the Controller of Her Majesty's Stationery Office © Crown Copyright. Unauthorised reproduction infringes Crown Copyright and may lead to prosecution or civil proceedings.

NO FURTHER COPIES MAY BE MADE. SDCDC Licence 100022500 (2013)



**South Cambridgeshire
Proposed Submission
Policies Map: July 2013**
Inset No. 88 Rampton
Map 1 of 1
Scale 1:5000

Reproduced from the Ordnance Survey Mapping with the permission of the Controller of Her Majesty's Stationery Office © Crown Copyright. Unauthorised reproduction infringes Crown Copyright and may lead to prosecution or civil proceedings.

NO FURTHER COPIES MAY BE MADE. SCDC Licence 100022500 (2013)

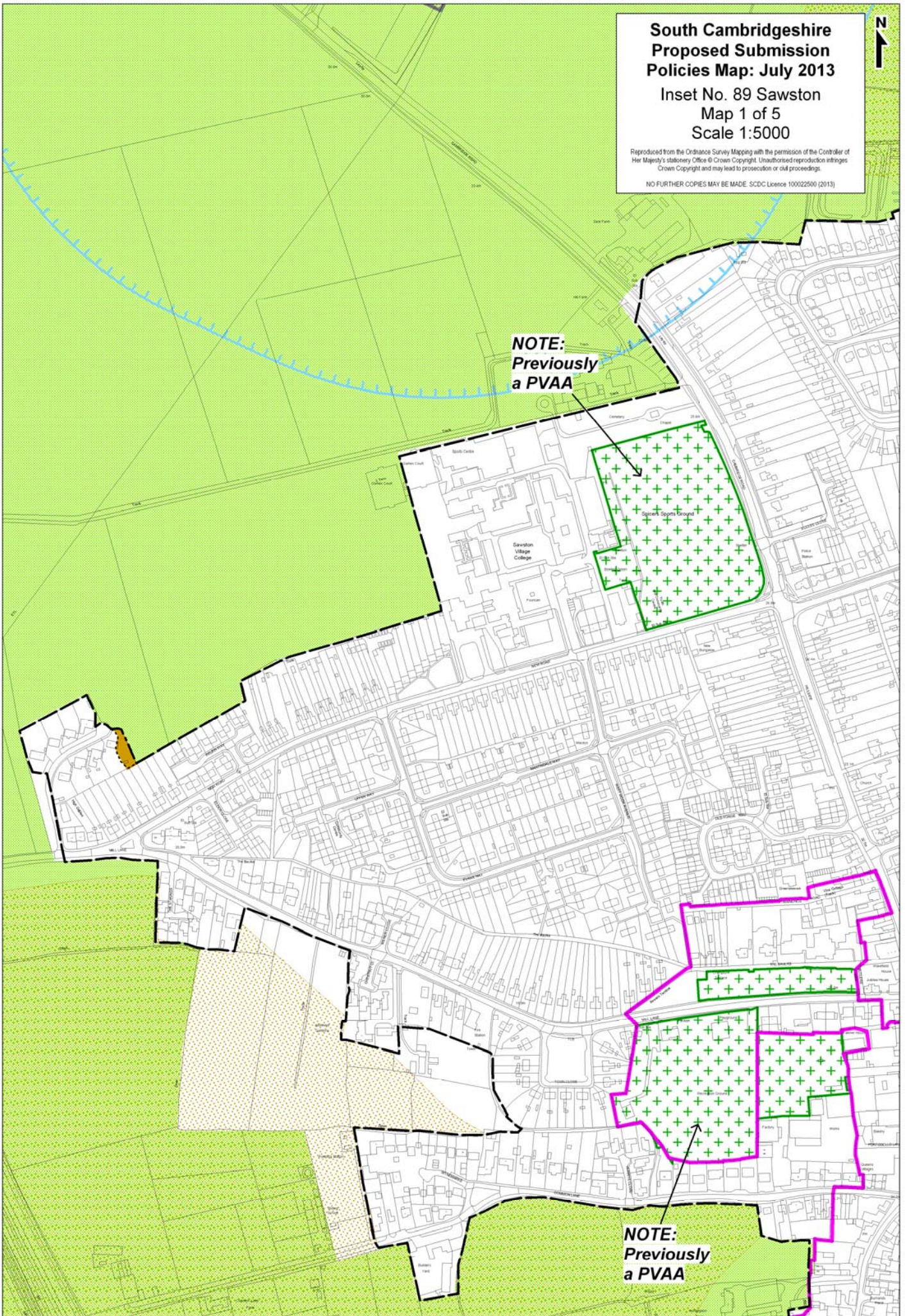
**South Cambridgeshire
Proposed Submission
Policies Map: July 2013**
Inset No. 89 Sawston
Map 1 of 5
Scale 1:5000

Reproduced from the Ordnance Survey Mapping with the permission of the Controller of Her Majesty's Stationery Office © Crown Copyright. Unauthorised reproduction infringes Crown Copyright and may lead to prosecution or civil proceedings.

NO FURTHER COPIES MAY BE MADE. SCDC Licence 100022500 (2013)

**NOTE:
Previously
a PVAA**

**NOTE:
Previously
a PVAA**





H1 (a)

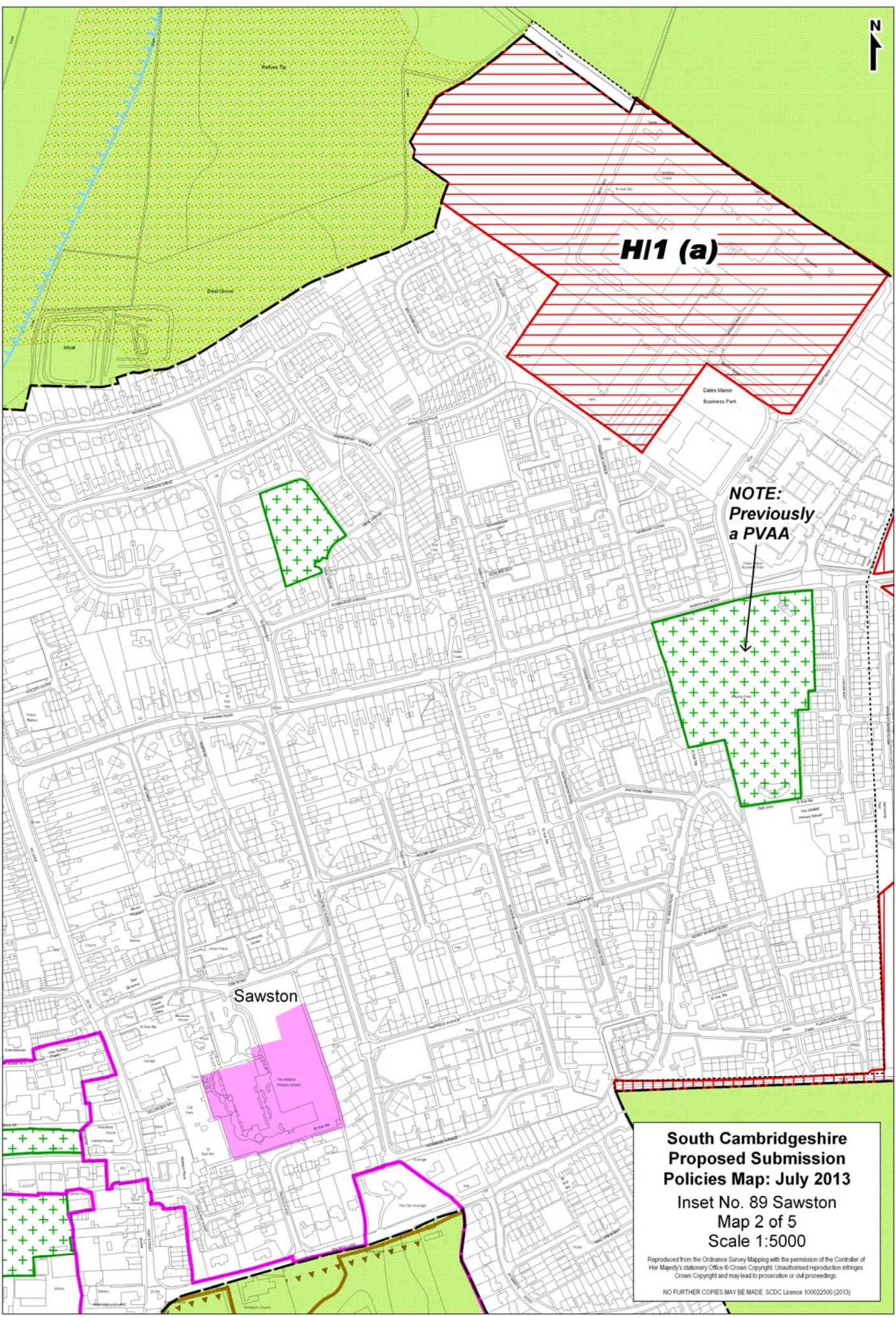
**NOTE:
Previously
a PVAA**

Sawston

**South Cambridgeshire
Proposed Submission
Policies Map: July 2013**
Inset No. 89 Sawston
Map 2 of 5
Scale 1:5000

Reproduced from the Ordnance Survey Mapping with the permission of the Controller of Her Majesty's Stationery Office © Crown Copyright. Unauthorised reproduction infringes Crown Copyright and may lead to prosecution or civil proceedings.

NO FURTHER COPIES MAY BE MADE. SCDC Licence 100022500 (2013)





H11 (a)

H11 (b)

H11 (c)

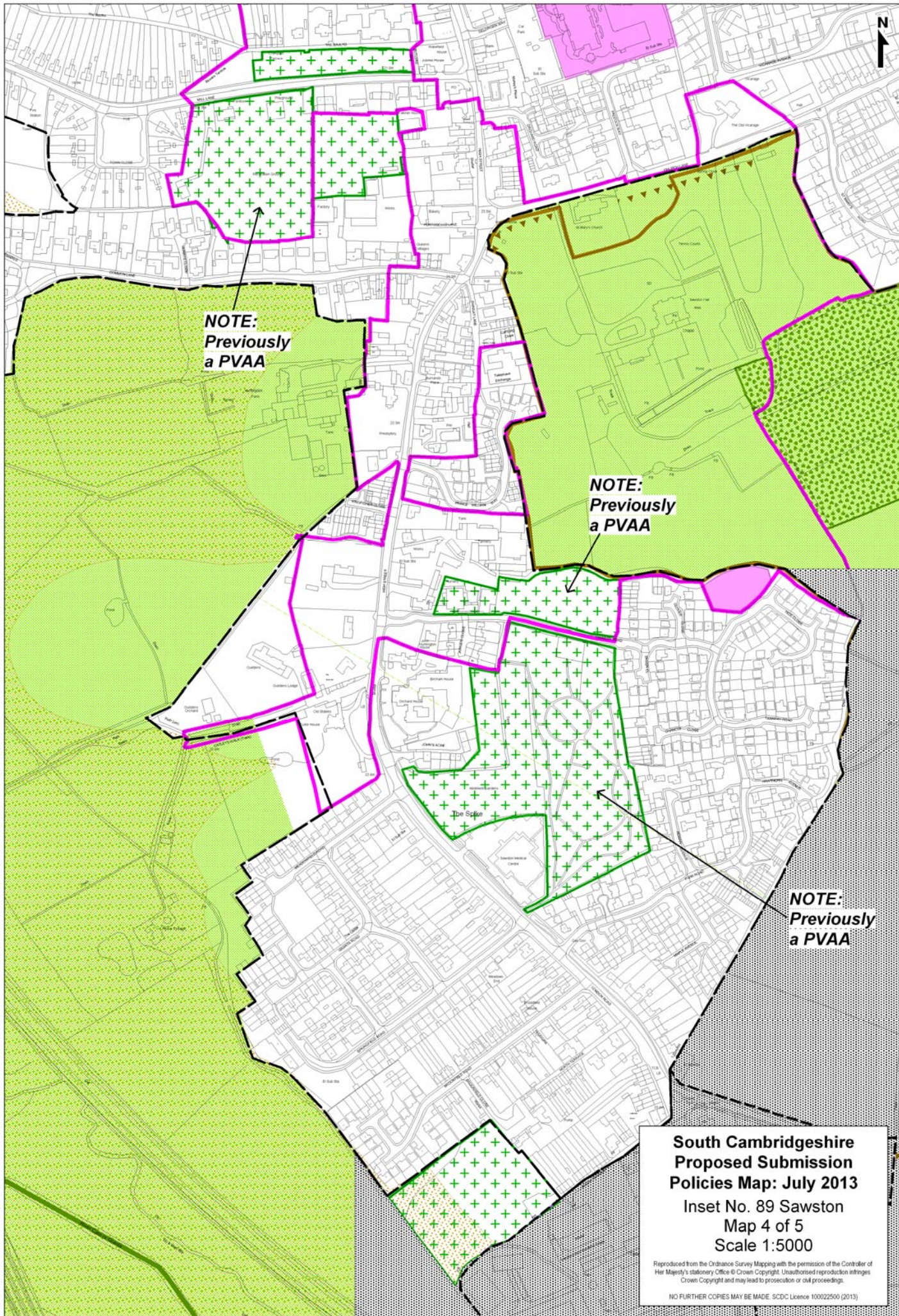
NOTE:
Previsouly
a PVAA

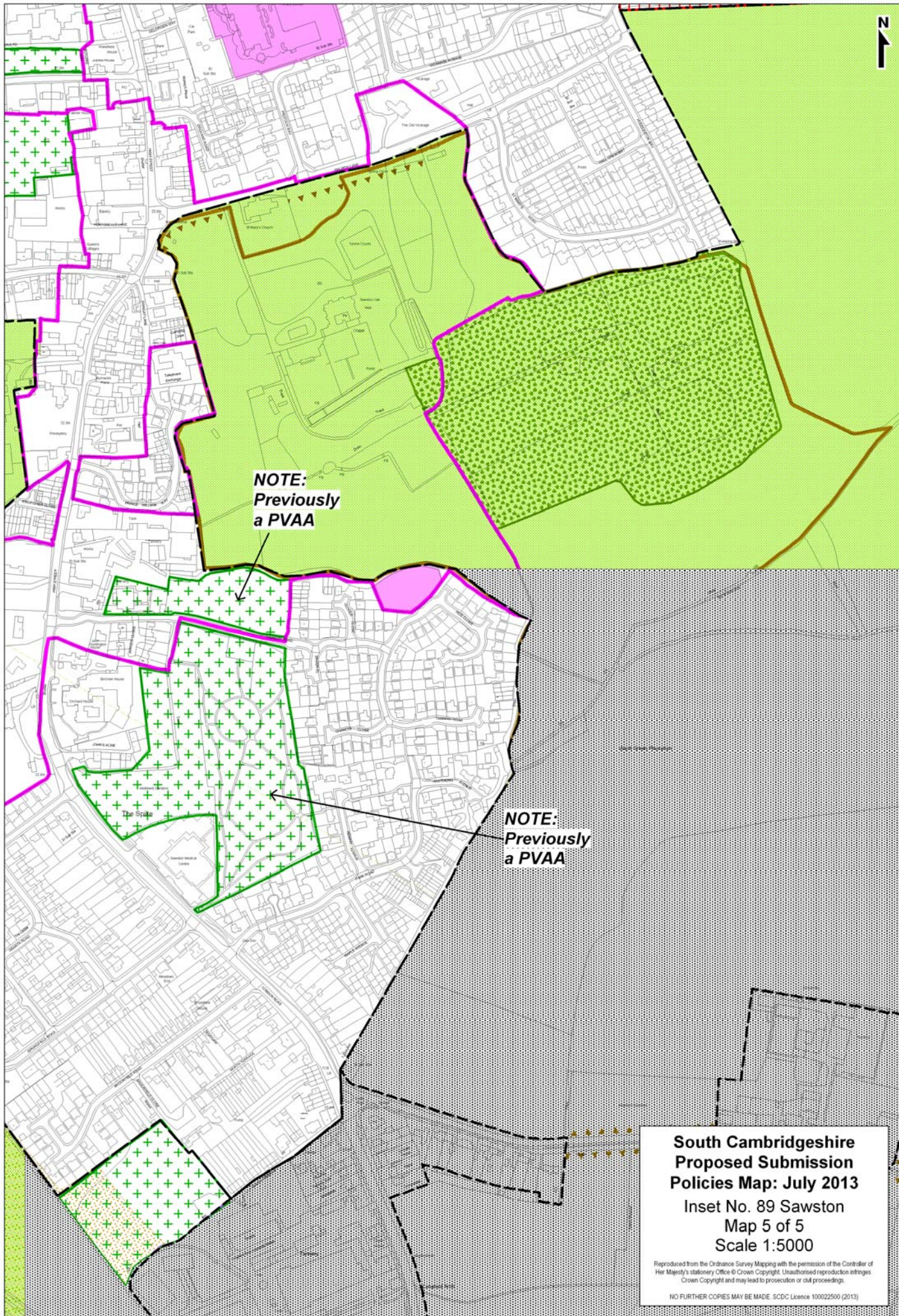


**South Cambridgeshire
Proposed Submission
Policies Map: July 2013**
Inset No. 89 Sawston
Map 3 of 5
Scale 1:5000

Reproduced from the Ordnance Survey Mapping with the permission of the Controller of Her Majesty's Stationery Office © Crown Copyright. Unauthorised reproduction infringes Crown Copyright and may lead to prosecution or civil proceedings.

NO FURTHER COPIES MAY BE MADE. SCDC Licence 100022500 (2013)





NOTE:
Previously
a PVAA

NOTE:
Previously
a PVAA

**South Cambridgeshire
Proposed Submission
Policies Map: July 2013**
Inset No. 89 Sawston
Map 5 of 5
Scale 1:5000

Reproduced from the Ordnance Survey Mapping with the permission of the Controller of Her Majesty's Stationery Office © Crown Copyright. Unauthorised reproduction infringes Crown Copyright and may lead to prosecution or civil proceedings.

NO FURTHER COPIES MAY BE MADE. SDCDC Licence 100022500 (2013)



E115 (2k)

Fabron

Warehouse

**South Cambridgeshire
Proposed Submission
Policies Map: July 2013**
Inset No. 90 Sawston Spicers
Map 1 of 1
Scale 1:5000

Reproduced from the Ordnance Survey Mapping with the permission of the Controller of Her Majesty's Stationery Office © Crown Copyright. Unauthorised reproduction infringes Crown Copyright and may lead to prosecution or civil proceedings.

NO FURTHER COPIES MAY BE MADE. SCDC Licence 100022500 (2013)